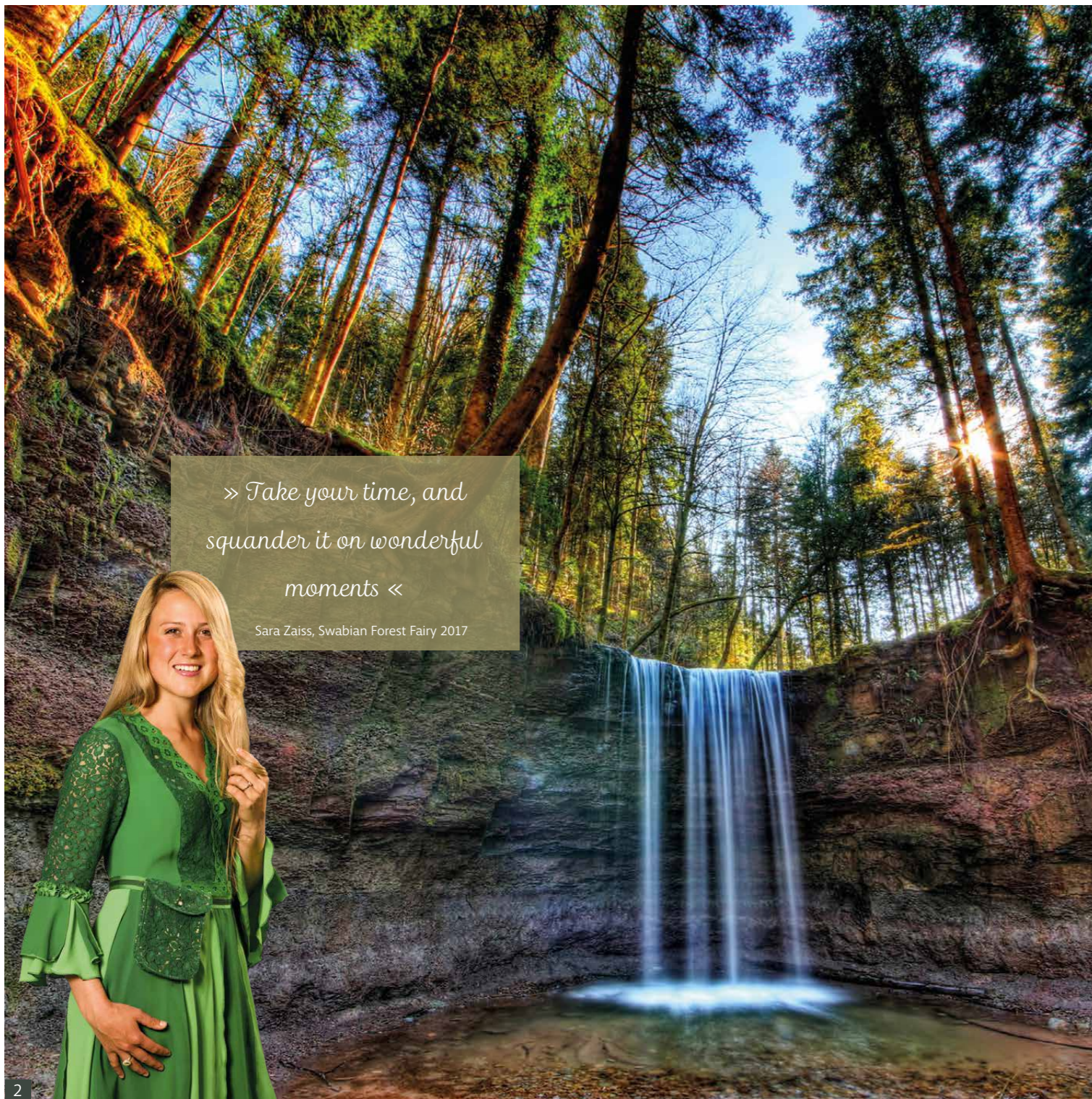




THE SWABIAN FOREST

» WHERE PLEASURE IS AT HOME «





» Take your time, and squander it on wonderful moments «

Sara Zaiss, Swabian Forest Fairy 2017



Meadows, woods, mills and Romans

In the unique Swabian Forest landscape there is much waiting to be discovered that culture or nature – or both together – have created. Fruit orchards flooded with light and dark forests with deep gorges and mysterious ravines are hikeable as are the vineyards. Relics of Roman times, they lie like a string of pearls along the Upper Germanic Limes which crosses the Swabian Forest and is an official UNESCO World Heritage Site. In addition to the lovingly maintained local, nature, or special museums, there are ancient mills, some still with functional machinery, high rope courses, and leisure and experience centres, all of which invite one to come and visit.

We hope this brochure will inspire you to discover the Swabian Forest. So that you do not have to discover it all by yourself, our Swabian Forest Fairy and our experts will lend you a helping hand. They will show you our beautiful landscape and introduce you to the many activities which promise a thrilling sojourn in the Swabian Forest.

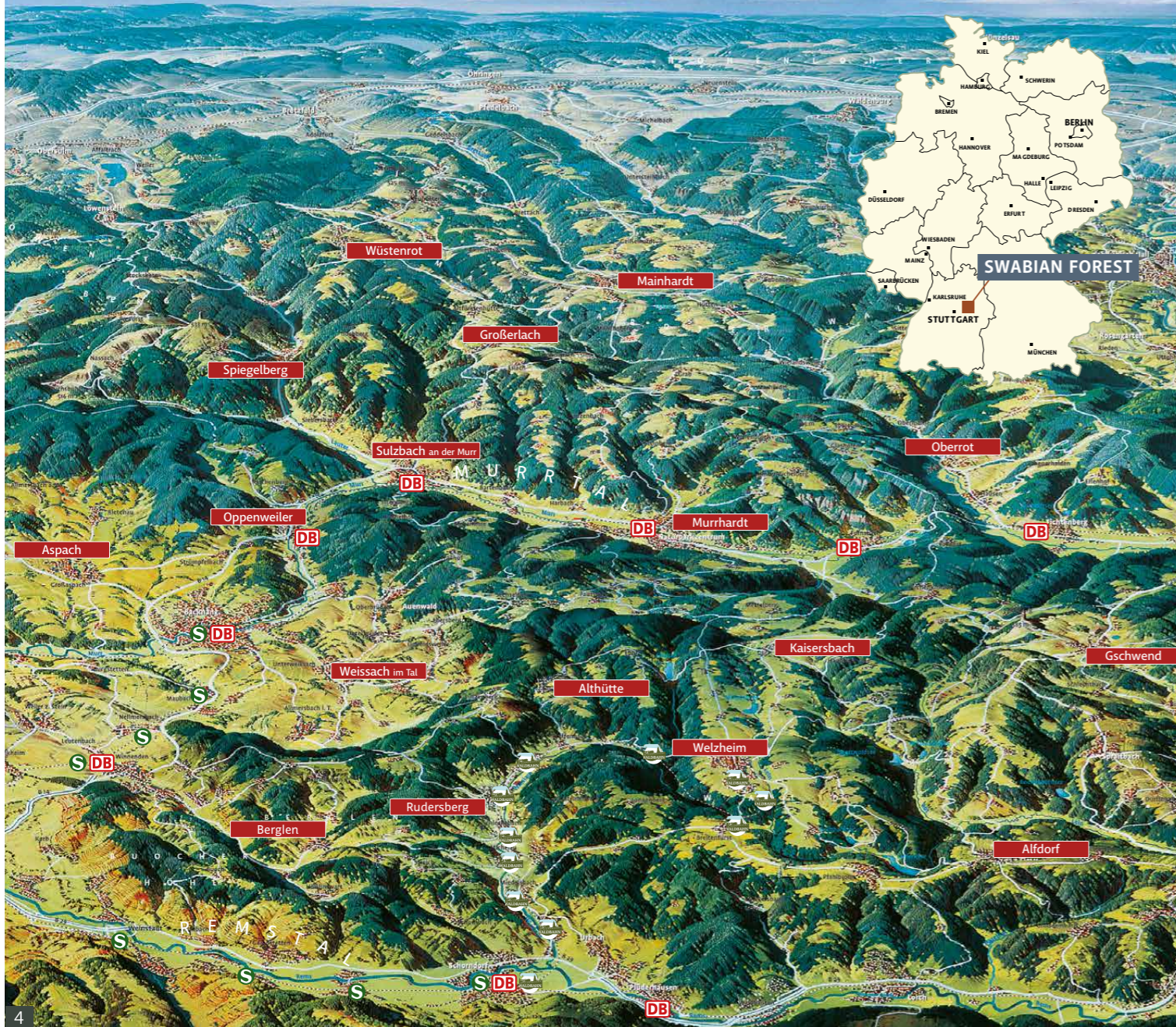
1 Hörschbach Waterfall | Murrhardt

2 View across the Swabian Forest towards Oberrot

The Swabian Forest
is partner of



SWABIAN FOREST



Contents

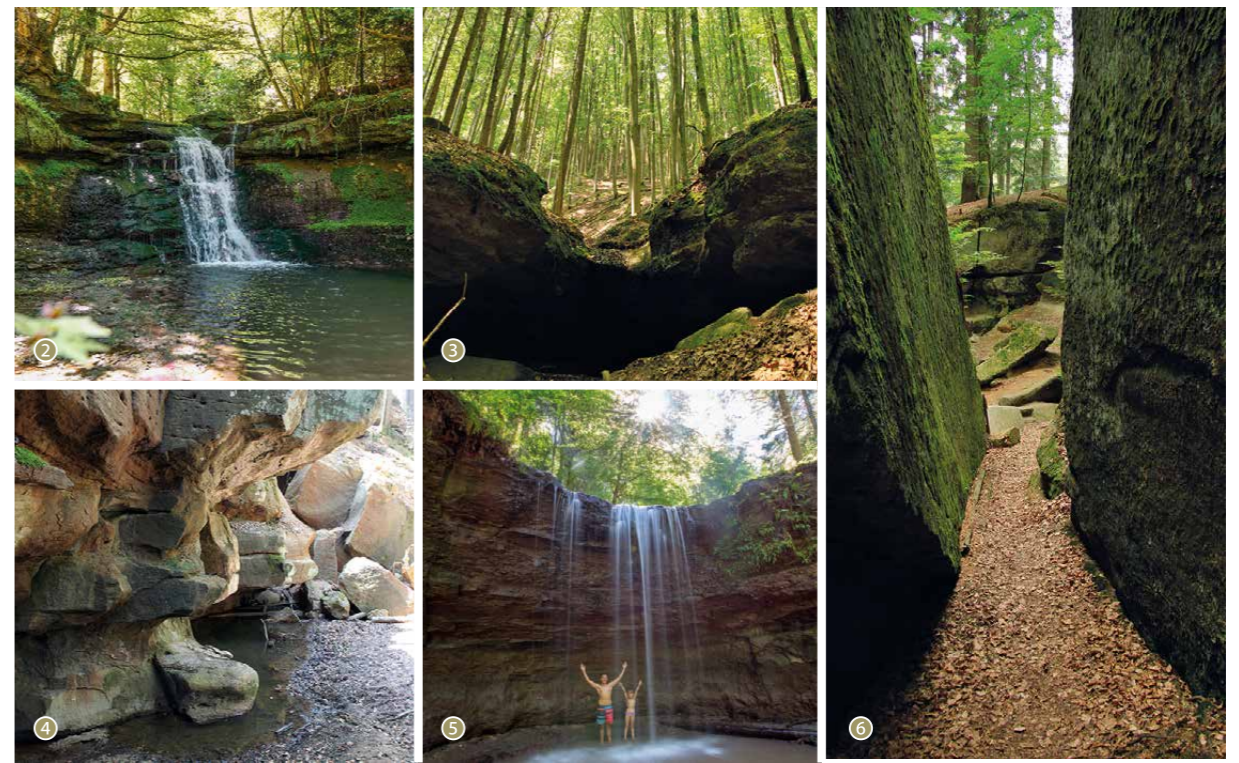
Swabian Forest Area map Contents	4	Museums Well-cleaners and rake-sharpeners	20
Natural monuments Gorges, grottoes, ravines	6	The Swabian Forest Railway Full steam uphill	22
Bathing lakes Sun, barbecues and water	8	Plan leisure time actively Using all the senses	24
Mills Diverse contemporary history of technology	10	When it snows Let's go	26
The Limes Lively cross-border trade	12	Restaurants Good food, attractive accommodation	28
Hiking with service Meadows and empires	14	Events A vibrant idyll	30
The Idyllic Road Scenic beauty and cultural history	16	Individual tours Experience, anecdotes included	32
Cycling Dynamic or relaxed	18	Nature Park Swabian-Franconian Forest	34
		Brochures about the Swabian Forest	36

» Not everything that gives pleasure is also beneficial,
but everything that is beneficial also gives pleasure. «

Pythagoras of Samos (570 - 500 B.C.)



» Freshly then, bravely
to work! To quote Schiller's
robber, Moor. «
Actors from the amateur theatre in Mainhardt



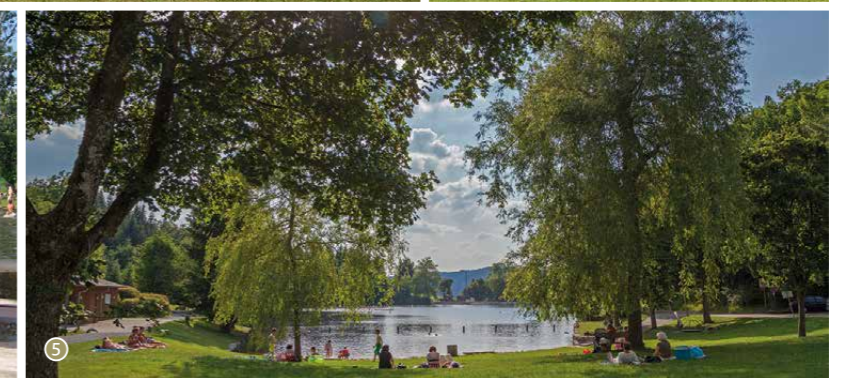
Natural monuments | Gorges, grottoes, ravines, rocks

The "Mouse-catcher of Kreuzle", the "old Haasen Michele" and the "old Gögelsstrobele" – the rebels and bandits of Mainhardt Forest knew them well, these gorges, ravines and grottoes. Deep in the woods, where the trees stand close together and steep valleys cut through the landscape, they had their hideaways. They entered great literature with Friedrich Schiller's "The Robbers". The amateur theatre group of Mainhardt keeps their memory alive with their interactive theatre. These bizarre gorges, ravines and grottoes are characteristic of the Swabian Forest. Today they are recognized as natural monuments which are accessible over well-maintained trails and offer thrilling hikes.

- 1 Gallengrotto | Kaisersbach
- 2 Wieslaufschlucht | Welzheim
- 3 Hüttlenwaldschlucht | Spiegelberg
- 4 Tobelschlucht | Spiegelberg
- 5 Hörschbachschlucht | Murrhardt
- 6 Hägelesklinge | Kaisersbach

» Water is a friendly element to
a man who knows how to deal with it. «

Johann Wolfgang von Goethe



Bathing lakes | Sun, barbecues and water

To lie on the grass in a beautiful landscape with the sun warming your tummy, to plunge into cool water, and then to have a barbecue - all this is possible at numerous bathing lakes in the Swabian Forest. The larger ones have snack bars and boat rentals. The range of activities spans bicycle hire to minigolf, and many lakes also offer fishing. They were often created as rafting lakes, such as the "Pearl of the Swabian Forest", the Ebni-see in Kaisersbach. The Waldsee in Fornsbach, Murrhardt, is also a reservoir lake and is entirely barrier-free, offering numerous leisure opportunities to those with mobility problems.

① Ebni-see | Kaisersbach

④ Badsee | Gschwend

② Aichstrutsee | Welzheim

⑤ Waldsee | Murrhardt

③ Hagerwaldsee | Alfdorf



» I make sure bread and rolls don't run out. «

Hartmut Kugler, miller in Murrhardt

1



2



3



4



5



6



7

Mills | Diverse contemporary history of technology

The mill is often mentioned in fairy tales – it's a mystical place. The miller, as the controller of complicated technology, was highly suspect to medieval people. Typical of the Swabian Forest are the numerous flour mills, sawmills and oil mills. Here, there is the greatest concentration of mills in all Baden-Württemberg and the greatest historical diversity in milling technology. On Whit Monday, Mill Day, the fifteen mills come to life again and the mill wheels clatter once again for the visitors. In some mills, the old machinery still exists in its entirety. Thirteen of the most attractive mills in the Swabian Forest are linked via a circular hiking trail, the Mill Hiking Trail in Rudersberg, Welzheim, Alfdorf, Kaisersbach, Gschwend and Murrhardt.

- 1 2 Meuschenmühle | Alfdorf
- 3 Klingenmühle | Welzheim
- 4 Mill shop in the Seemühle | Unterweissach
- 5 Glattenzainbachmühle | Murrhardt-Kirchenkirnberg
- 6 Brandhofer Ölmühle | Gschwend
- 7 Hagmühle | Alfdorf



» Come with me for a hands-on Limes experience. «

Markus Schaaf, Cicerone from Welzheim



The Limes | Lively cross-border trade

Here they stood, the Romans, scowling across at the country of barbarians. Straight as a die, the Upper Germanic Rhaetian Limes crosses the Swabian Forest. In AD 150 the Romans built this part of their border from Mainhardt to Alfdorf. Original remnants and striking reconstructions can be viewed along this stretch of the UNESCO World Heritage Site. There is the reconstructed Limes Tower at Heidenbuckel near Großlach-Grab – the only depiction of tower, wall and ditch nationwide – or the Welzheimer Eastern Fort. Perhaps the Romans did not scowl quite so darkly at the Germanic peoples after all; there was a lively trade going on across the Limes.

1 Limes tower Heidenbühl | Murrhardt

2 Archeological Park Eastern Fort | Welzheim

3 Virtual Limes worlds

4 Roman Museum | Mainhardt

5 Limes tower | Großlach/Grab



» Discover the forest with all your senses, the nature park guides are here to help. «

Walter Hieber and Prof. Dr. Manfred Krautter, Nature Park guides



Hiking with service | Meadows, palaces and empires

To hike through nature, to discover interesting facts about the surroundings and all this easily and comfortably, this is the idea behind the service hiking trails offered by the Swabian Forest. The **Mill Hiking Trail** leads to the most attractive mills and the **Limes Hiking Trail** follows the ancient Roman border. A cross-section of the natural beauties and history of the region is offered by the **Swabian Forest Trail**; the **Train Experience Trail** highlights the history of the train along idyllic stretches; and whoever is travelling the road as a pilgrim under the sign of the shell will find plenty of information on the **Way of St. James** in the Swabian Forest.

The service hiking trails are uniformly signposted. There are detailed folding maps on each thematic hiking trail as well as the relevant GPS files and smartphone app from WanderWalter. Maps, texts, and pictures offer information on attractions together with inns along the way. There are 150 audio files available via your smartphone offering information and interesting facts about the sights along your trail.

On the five thematic trails, nature park guides, tourist guides and Limes cicerones offer special tours. For instance, the herb-wife takes you to blooming meadows, the Limes cicerone leads you through the Imperium Romanum, the Goldstoffel takes you to enchanted old mines, and the damsel of the castle guides you through the Reichenberg Castle in Oppenweiler.

- 1 Aboretum | Sulzbach an der Murr
- 2 Hägelesklinge | Kaisersbach
- 3 Town hall Wasserschloss | Oppenweiler
- 4 Silver mine in the Pfaffenklinge | Wüstenrot

» *If you stand still for a moment, you
can make a lot of progress.* «

Anke Maggauer-Kirsche (*1948), German poet



The Idyllic Road | Scenic beauty and cultural history

If the Swabian Forest can claim one attribute for itself, it is that of an idyll. The 130-kilometre-long "Idyllic Road" was launched fifty years ago. Until today, this tourist holiday route running between Mainhardt and Alfdorf, Spiegelberg and Oberrot, has lost nothing of its charm. Meandering past old mills, bathing lakes, relics and reconstructions of the Limes, it encompasses one of the most beautiful hiking landscapes in southern Germany. It leads past scenic landscapes, natural wonders, village churches, mills, castles and along the World Heritage Site, the Limes.

Along the route, former silver mines such as the one in the Pfaffenklinge near Wüstenrot are witness to the vain struggle for a little wealth. The landscape is romantic, its forests traversed by gorges and ravines, and the characteristic meadow orchards in the region of Berglen seem particularly tranquil and peaceful.

The Skulpturenpfad in the town centre of Weissach im Tal; the Keuperlehrpfad in Aspach; and the "Weiterweg" in Gschwend invite culture enthusiasts on an interesting and thrilling journey.

At one of the many lookout towers and hiking cabins such as that at Sulzbach Eschelhof, maintained and catered by the Swabian Alps Association, you have the opportunity to rest and lingering to enjoy the view.

1 Weiterweg | Gschwend

2 Vineyards | Aspach

3 Skulpturenpfad | Weissach im Tal

» I thought of that while riding my bicycle. «

Albert Einstein on the theory of relativity.



1



2



3



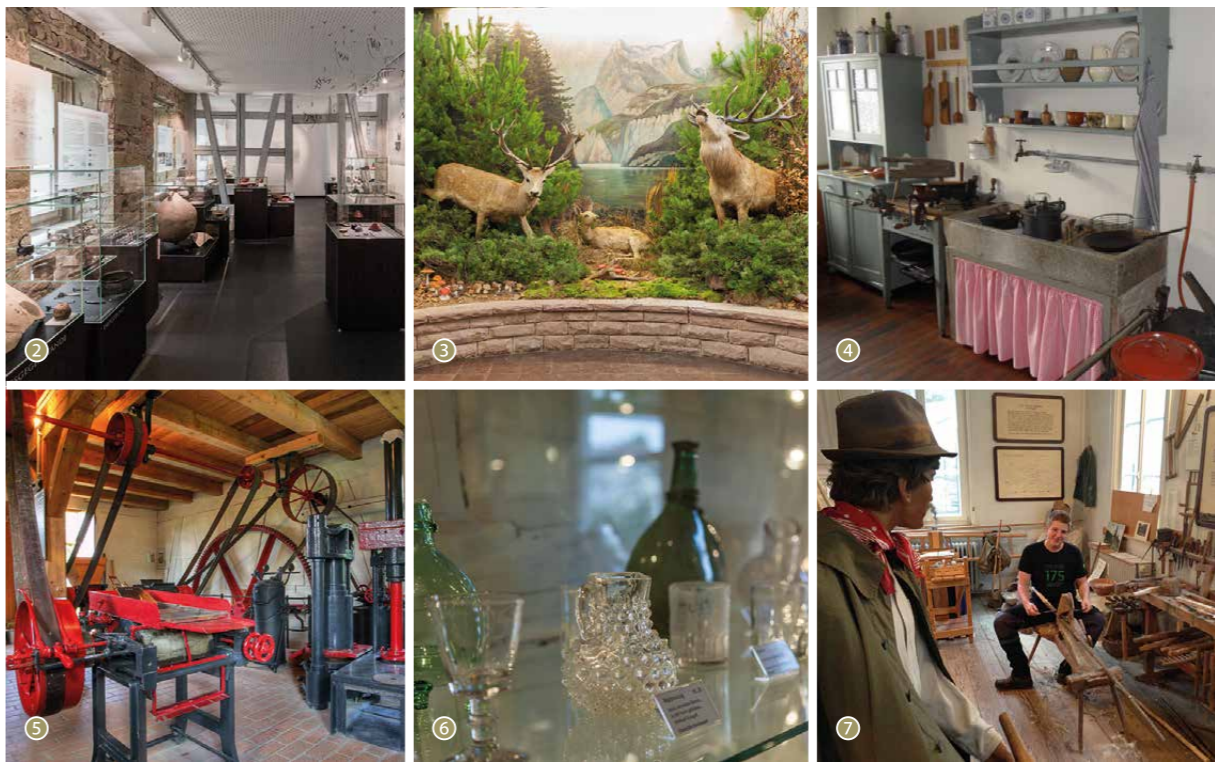
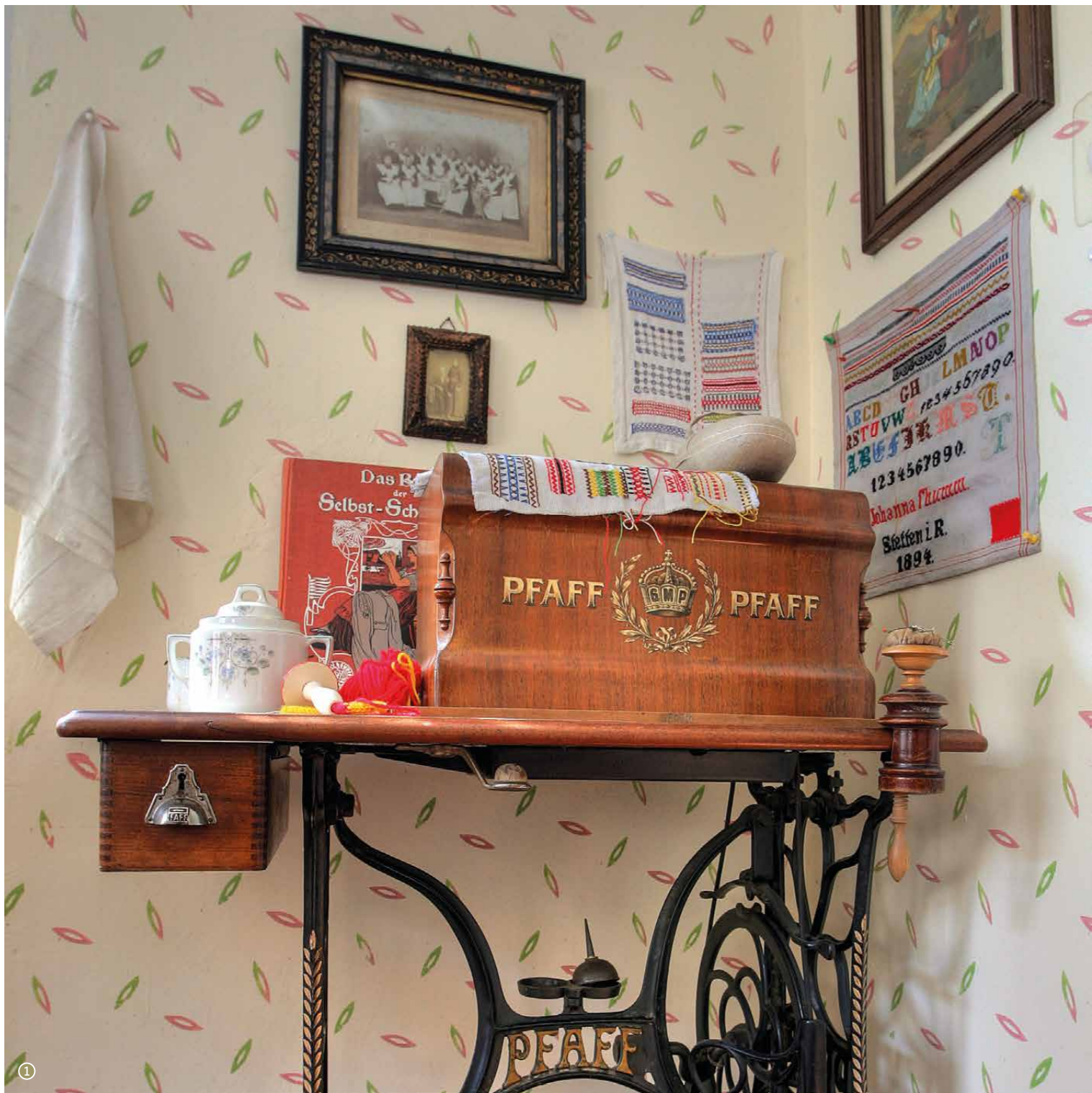
4

Cycling | Dynamic or relaxed

“Stiff ascents and rapid descents” are promised to the athletic cyclist by the nine mountain-bike routes in the Swabian Forest. A route network of 300 kilometres altogether leads past vineyards, meadow orchards, and numerous other interesting sights. The routes were chosen to be as compatible as possible with the natural landscape.

The Stromberg-Murrthal bike path is an excellent bike path geared specially to the needs of leisure cyclists and offers families, pleasure-seekers, and sports cyclists the appropriate tour. If you like, you can rent a Pedelec at one of the many rental stations and discover what riding an electric bike is like.

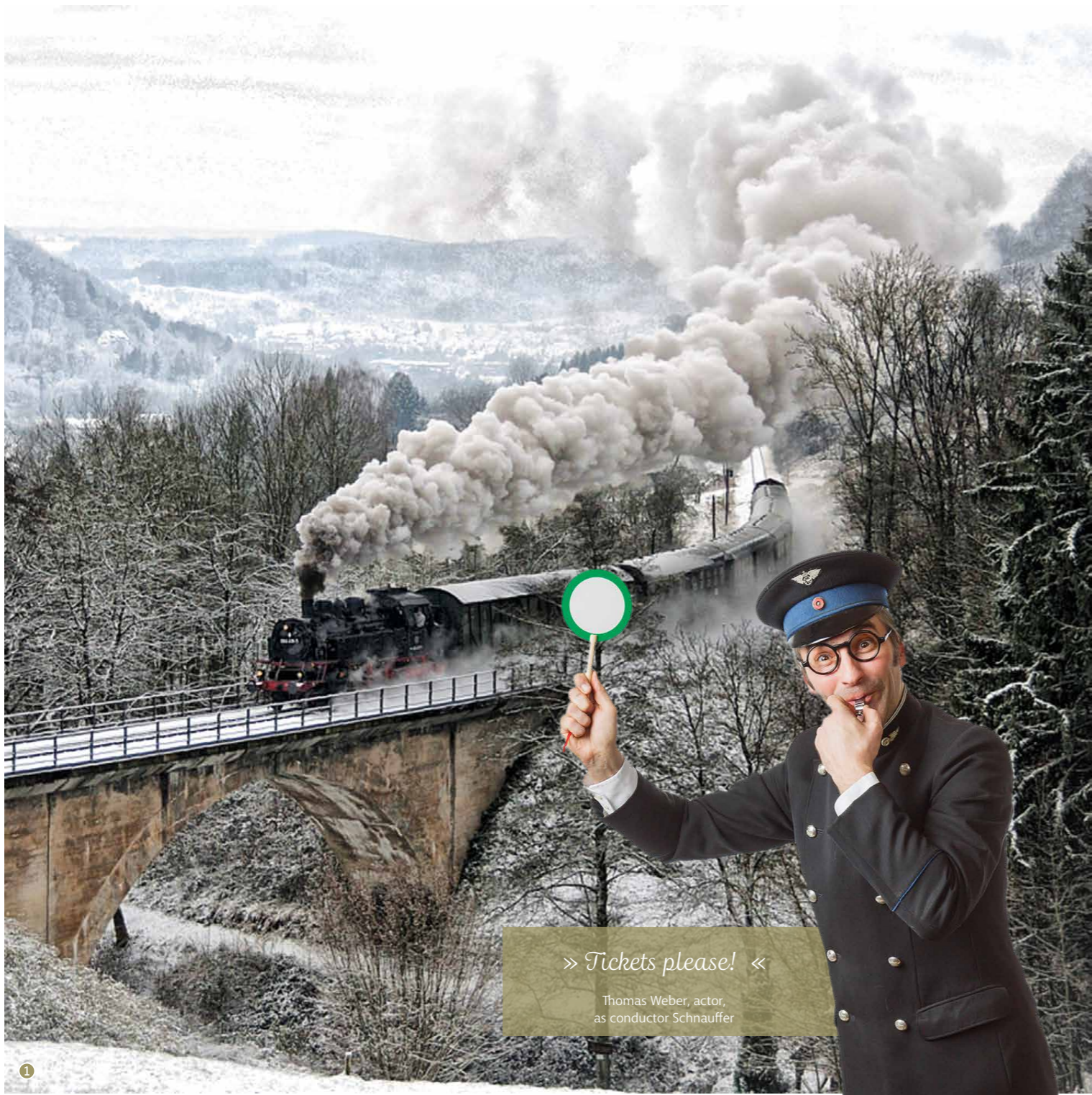
- 1 E-Bike-Tour | Cycling with the wind at your back
- 2 Bike tour | In the heart of the Rems-Murr district
- 3 Mountain-bike trail | Spiegelberg
- 4 Mountain-bike tour | Oppenweiler



Museums | Well-cleaners and rake-sharpeners

In addition to the larger museums of the Swabian Forest which deal with art, nature, glass-manufacture and historical relics, there are many smaller local museums. How did the farmers live? The wine-growers, the peddlers, the craftsmen? How did the housewives work? The rake-sharpeners, the well-cleaners, tailors, cobblers, carpenters and potters? This is all brought to life in the Rechenspitzermuseum in Althütte, for instance in special exhibitions which include tours and demonstrations. The smaller museums, which show village history, are maintained mainly by the commitment of the local heritage clubs and historical societies.

- 1 Sägmühlmuseum Marhördt | Oberrot
- 2 Museum Welzheim
- 3 Carl-Schweizer-Museum | Murrhardt
- 4 Museum in den Berglen
- 5 Museum Ölmühle Michelau | Rudersberg
- 6 Glass museums in Spiegelberg and Wüstenrot
- 7 Rechenspitzermuseum | Althütte



» Tickets please! «

Thomas Weber, actor,
as conductor Schnauffer



The Swabian Forest Railway | Full steam uphill

The Swabian Forest Railway needs a full head of steam when it chugs steeply uphill over three impressive viaducts through scenic landscape from Schorndorf via Rudersberg up to Welzheim. Here the route is steeper than the Geislinger Steige and therefore not only the most scenic but also the steepest in Baden Württemberg. On November 24, 1911, the first locomotive puffed along the almost 23-kilometre long “Bergbahn” route. After a long shutdown, it was brought back into operation in 2010. From the beginning of May until the end of October, and also during Advent, the trains of the DBK Historic Train Association run on Sundays and holidays. “Conductor Schnauffer” accompanies the passengers on the soundtrack of the Train Experience Trail.

- 1 Igelsbachviadukt | Rudersberg
- 2 Laufenmühlviadukt | Welzheim
- 3 In the engine driver's cab
- 4 Water fuelling station | Bahnhof Welzheim
- 5 Strümpfelbachviadukt | Rudersberg



» There are even some senses that we never make use of. «

Voltaire

①



Plan leisure time actively | Using all the senses

We have some senses that we do not need, but it is still nice to use them. And this can be done in the Swabian Forest in several locations. Vertigo in the high and low rope courses, for instance in the EC-Freizeitheim (leisure facility) in Althütte-Sechselberg. The frisson in Großerlach when your mountain board whizzes down the hill or when the roller coaster in the Schwabenpark in Kaisersbach gains momentum. But one can also discover the finer senses. At the Laufenmühle in Welzheim, the "Eins + Alles" Sense Park offers a whole forest full of sensory experiences.

① "Eins + Alles" Sense Park | Welzheim

② High rope course | Althütte

③ Schwabenpark | Kaisersbach

④ Birds of prey | Wüstenrot

⑤ Mountainboarders | Großerlach



» *Winter tames man,
woman, and beast.* «

William Shakespeare



When it snows | Let's go

The Swabian Forest is especially magical when the woods are full of snow and long icicles hang in the ravines. Hikes and walks at this time are a special experience. On the heights, numerous cross-country ski trails have been groomed and the ski lifts in Spiegelberg, Großerlach, Kaisersbach and Gschwend offer well-kept downhill ski slopes. Many of the lakes are frozen to a good depth, inviting ice-skating at a particularly idyllic location. At one's own risk, of course. And when your nose is red from the nipping cold, you will often find a hut there offering hot tea or mulled wine.

① Skilift in the leisure centre | Großerlach

② Nighttime skiing | Ski lift at Spiegelberger Juxkopf

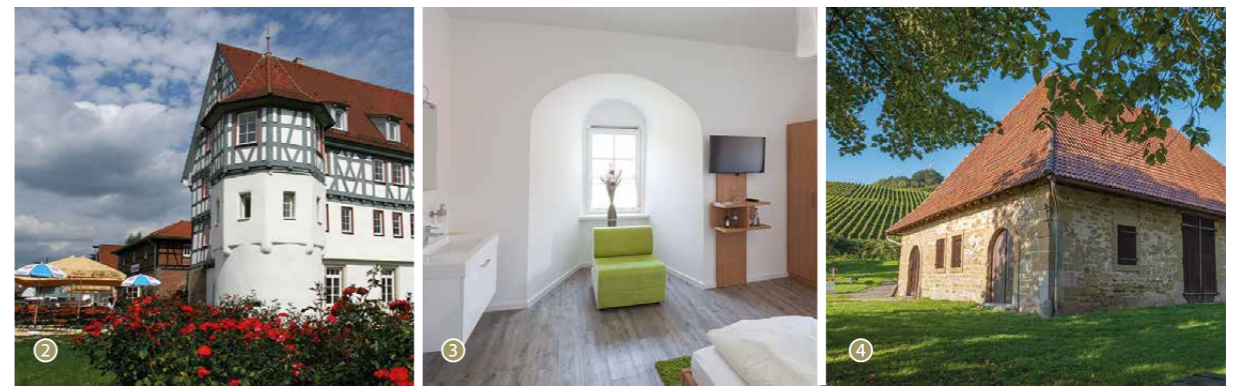
③ Swabian Forest Lift | Gschwend

④ Cross-country trails in Wolfenbrück | Oberrot



» *We want our guests
to feel like friends.* «

Simon and Susanne Blessing
of Blessings Landhotel in Berglen-Lehnenberg



Restaurants | Good food, attractive accommodation

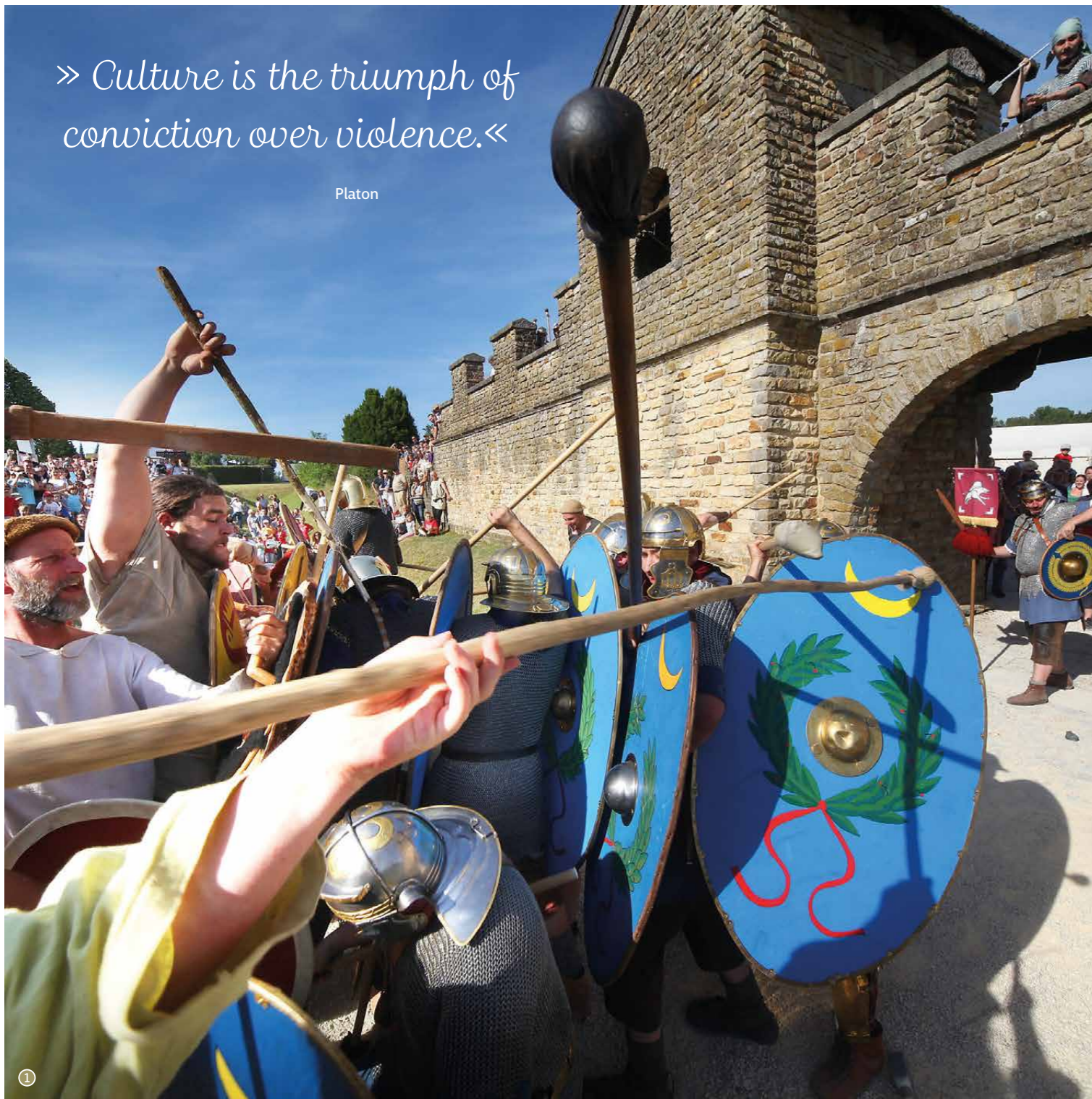
Are there such things as UFOs? Maybe. Ghosts? Maybe. However, there is definitely no such thing as a Swabian who doesn't like to eat well and a Swabian housewife who can't cook. And this is why a long hike in the Swabian Forest always ends with pancake soup, a hearty roast with spaetzle, Swabian ravioli, or, at the very least, a sausage salad. You will find lists of good inns and cafés, hotels and holiday apartments with classification up to four and five stars in our host directory. After all, it is the hospitality of the restaurant and accommodation services that highlight the natural beauty and culture of the region.

Dishes with ingredients exclusively from the Nature Park Swabian-Franconian Forest are to be found on the so-called "Naturparkteller" (Nature Park platter), offered by over 60 restaurants in 30 regional municipalities. The local food is paired well with the local drinks from one of the many orchards or vineyards surrounding Aspach. And if you really like the food from the Swabian Forest, you can buy it directly from the direct regional marketers and take it home with you.

- 1 Orchard | Berglen
- 2 Beer garden Brauhaus am Schloßle | Sulzbach an der Murr
- 3 Burg Waldenstein | Rudersberg
- 4 Historic wine press house | Aspach

» Culture is the triumph of conviction over violence.«

Platon



Events | A vibrant idyll

The Swabian Forest is an idyll, and it is also full of life. On Mill Day, the mills open their doors for visitors, and cultural festivals – such as the Murrhardt Sommerpalast (Summer palace), the Musikwinter (Musical winter) in Gschwend, and the “Heimspiel” (Home game) by Andrea Berg in the Sonnenhof in Aspach – present renowned international artists. The different communities organize atmospheric Christmas and Advent markets and, in summer, numerous thematic festivals, such as the great pumpkin party in the Schlossgarten in Oppenweiler, enchant the visitors.

On the annual Swabian Forest Day in September, the entire region sparkles in all its different facets. The programme includes thematic hikes, bicycle tours, excursions and experiential pedagogic offers. Regional suppliers spoil the visitors with a culinary cornucopia of their products.

There are also some very special event locations in the Swabian Forest. Churches, taverns, mills and barns are enlivened during the Winter-Kultur-Tage (Winter culture days) with music, cabaret, comedy and different cuisines. At this festival, quality and entertainment value are superbly combined.

1 Roman days | Welzheim

2 Mill Day | Rümelinsmühle Murrhardt

3 Ebnisee for everyone | Kaisersbach

4 Sommerpalast | Murrhardt



» We reveal history
and nature to you
– quite individually «

Michaela Köhler from Großerlach as "Rickele",
the wife of the poet and doctor Justinus Kerner in Welzheim

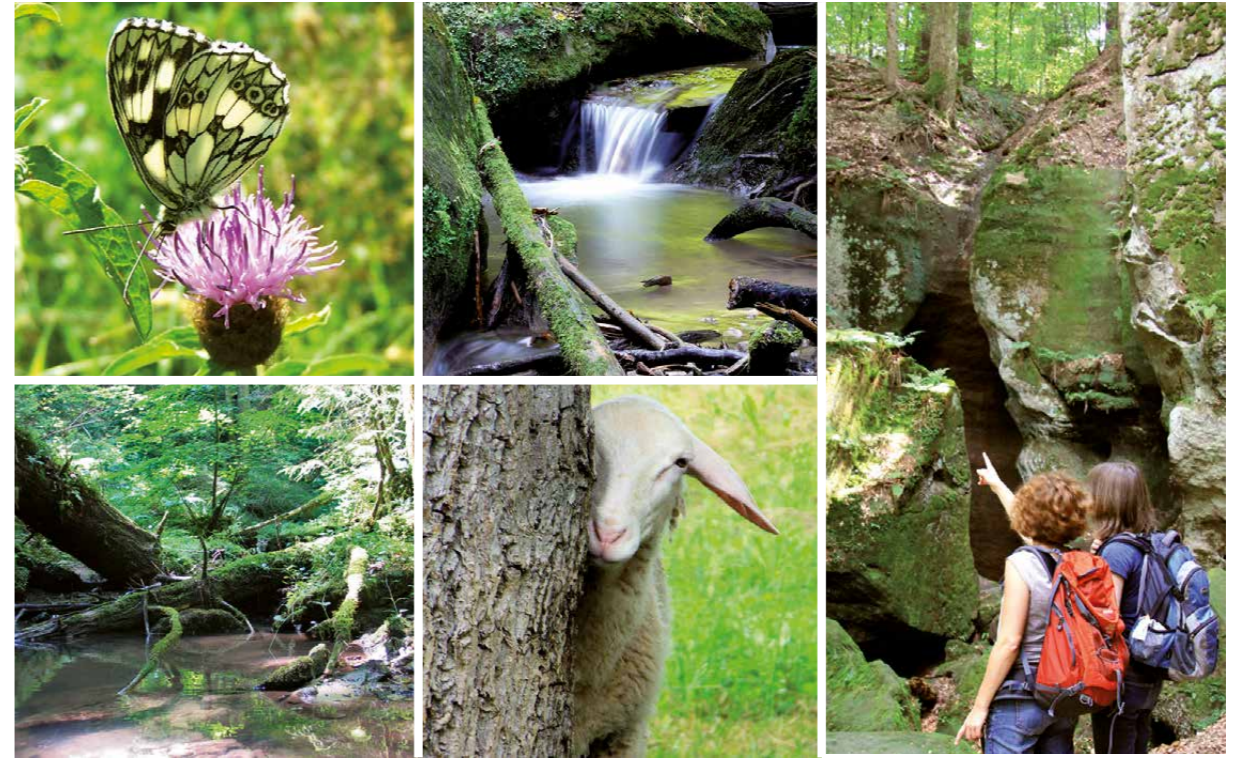
①



Individual tours | Experience, anecdotes included

On an individual tour you can experience the Swabian Forest with its historic towns, its Roman past, and its idyllically located mills. The nature park guides take their guests on a journey of discovery through their native landscape. The Limes Cicerones travel with you through time to the Roman past along the World Heritage Site, the Limes – a thrilling, informative and vibrant journey. Special staged city tours are also available. The poet and doctor Justinus Kerner, or his wife, "Rickele", guide you through Welzheim, and in Murrhardt, the night watchman takes you through the alleys and byways while spicing his historic narrative with Swabian anecdotes.

- ① ② Out and about with the nature park guides
- ③ Guided tour with snack
- ④ Herb tour in Wasenhof | Großerlach
- ⑤ Night watchman tour | Murrhardt
- ⑥ Justinus Kerner guides you through Welzheim



Nature Park | Swabian-Franconian Forest

The Swabian Forest is located right in the centre of the diverse Swabian-Franconian Forest. The nature park is a large protected area of about 1,270 sq. km with roughly 170,000 inhabitants. Approximately 40 percent of the nature park is protected by nature conservation, landscape conservation or special EU-protected areas. For both the inhabitants and visitors, a mindful natural experience is promoted with projects from the fields of direct marketing, ecological education, nature conservation and protection of cultural heritage.

Get to know this diversity: by visiting the nature park markets that present regional products in five villages, which are taking turns each year; by walks and hikes through unspoilt woods with nature park guides; by taking part in a delicious "Brunch at the farm"; or with thrilling natural experiences for all the senses at "Nature experience camp Wüstenrot", "Ebnisee for everyone", and "Gaildorf relaxes".

You will find further information at www.naturpark-sfw.de.



Hiking

- **Servicewanderwege** | Guided hikes, long-distance hikes and hiking, baggage-free, 2018 edition
- **Mill Hiking Trail** | Folding map with main hiking route and five single routes, 2016 [english edition](#)
- **The Limes Trail** | Folding map, trail from Grab to Pfahlbronn, 2016 [english edition](#)
- **Jakobsweg** | Folding map, trail from Schwäbisch Hall to Esslingen am Neckar, 2017 edition
- **Schwäbischer Wald Weg** | Folding map, 2016 edition
- **Idyllische Straße - Wandern aktiv** | Box with 24 suggested trails, 2018 edition
- **Bahnerlebnispfad** | Folding map with information on the Swabian Forest Railway, 2017 edition
- **Erlebnis-Touren rund um Rudersberg und Althütte** | Folding map with 13 hiking trails, 2016 edition
- **Wanderlust in Welzheim, Alfdorf und Kaisersbach** | Folding map with 21 hiking trails, 2016 edition
- **Wandern im magischen Dreieck** | Folding map with 21 hiking trails in the Großerlach, Mainhardt and Wüstenrot regions, 2016 edition
- **Wandertouren rund um Sulzbach an der Murr** | Folding map with hiking trails, 2018 edition
- **Wandertouren rund um Oppenweiler** | Folding map with 7 hiking trails, 2011 edition
- **Wandern in und um Berglen** | Folding map with hiking trails, 2018 edition
- **Wandern rund um Oberrot und Fichtenberg** | Folding map with hiking trails, 2018 edition
- **Murrhardt „sagenhaft“** | 4 individual flyers, 2018 edition
- **Erlebnisswanderweg „s'Äpple“** | Folding map, landscape experience trail along the Backnanger Bucht, 2017 edition



Bicycling

- **Idyllische Straße Rad- und Autoroute** | Folding map, 2018 edition
- **Stromberg-Murratal-Radweg** | Folding map 2017 edition
- **Fünf-Landkreis-Radtour** | Folding map, 2011 edition
- **Kernige Steigungen und rasante Abfahrten 1** | Folding map with four mountain-bike tours around Oppenweiler, Aspach, Sulzbach an der Murr and Spiegelberg, 2017 edition
- **Kernige Steigungen und rasante Abfahrten 2** | Folding map with three mountain-bike tours around Murrhardt, 2015 edition
- **Kernige Steigungen und rasante Abfahrten 3** | Folding map with four mountain-bike tours around Rudersberg, Welzheim and Alfdorf, 2016 edition
- **Rad aktiv** | Folding map with cycling tours around Rems, Murr and in the Swabian Forest, 2018 edition
- **Radeln mit Rückenwind Nord** | With the electric bike through the northern part of the Nature Park Swabian-Franconian Forest, folding map, 2015 edition
- **Radeln mit Rückenwind West** | With the electric bike through the western part of the Nature Park Swabian-Franconian Forest, folding map, 2015 edition
- **E-Bike Region Stuttgart - Radkarte Region Stuttgart** | 24 tours for explorers and pleasure-seekers, folding map, 2017 edition
- **Welzheimer Radelspaß** | 12 bicycle tours around the Limes city, folding map, 2013 edition



Leisure activities

- **Freizeitaktivitäten im Schwäbischen Wald** | Brochure, 2017 edition
- **Kinder Erlebnis-Freizeitkarte** | Folding map, 2017 edition
- **Schwäbischer Wald FREIZEITung** | Magazine for visitors with tourist information on the region, restaurant tips and tour recommendations
- **Schwäbischer Wald -Hier lebt der Genuss** | Brochure with bookable group offers



Guided Tours

- **Naturpark aktiv** | Brochure, guided hikes with the nature park guides on every Sunday
- **Historischer Stadtrundgang Murrhardt** | Brochure, 2017 edition
- **Historischer Stadtrundgang Welzheim** | Flyer, 2015 edition



Tourist buses

- **Waldbus-Limesbus** VVS-Brochure (with timetable)
- **Räuberbus** VVS-Brochure (with timetable)
- **Berg- und Talbus** VVS-Brochure (with timetable)



Pleasure

- **Naturparkteller** | Brochure, numerous hosts in 30 communities in the Nature Park offer delicious dishes plus one drink for only 14 euros
- **Gastgeberverzeichnis** | Brochure listing the restaurant and accommodation facilities in the Swabian Forest

You can order our brochures at:

Fremdenverkehrsgemeinschaft Schwäbischer Wald

In the Landratsamt Rems-Murr-Kreis | Alter Postplatz 10 | 71332 Waiblingen
Telephone 0049 (0) 71 51 / 501 - 1376 | Telefax 0049 (0)71 51 / 501 - 1188
info@schwaebischerwald.com

www.schwaebischerwald.com



Imprint

1st Edition 2018

Editor: Fremdenverkehrsgemeinschaft Schwäbischer Wald e.V.,
Alter Postplatz 10, 71332 Waiblingen, Telephone 0049 (0)7151-501-1376,
info@schwaebischerwald.com, www.schwaebischerwald.com

Texts: Ulrich Mayer, Barbara Schunter, Hardy Wieland

Fotos: Stefan Bossow, Edgar Layher, Alexander Becher, Gabriel Habermann, Ulrike Bastgen,
Gernot Riecker, Frank Kleinbach, Gemeinde-Archive, Naturpark Schwäbisch-Fränkischer Wald

Design, typesetting and production: agentur arcoss, Telephone 0049 (0)7192-925111

THIS PROJECT WAS SPONSORED BY
the Nature Park Swabian-Franconian Forest funds from the Land
Baden-Württemberg and the Glücksspirale Lottery.



THE SWABIAN FOREST

INFORMATION AT

Fremdenverkehrsgemeinschaft
Schwäbischer Wald e.V.

Alter Postplatz 10 | 71332 Waiblingen
Telephone 0049 (0) 71 51 / 5 01 13 76

info@schwaebischerwald.com

www.schwaebischerwald.com

Partners of the Swabian Forest

